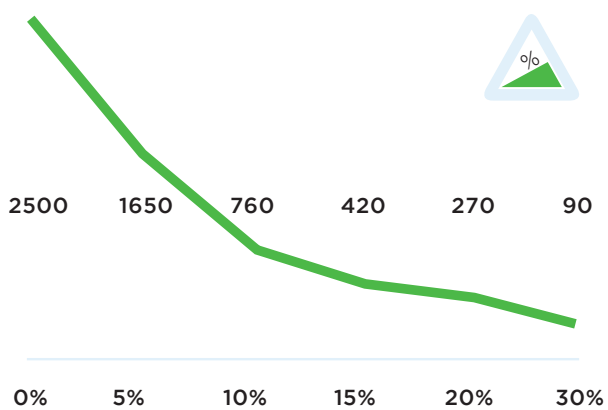




## Specifications T2500

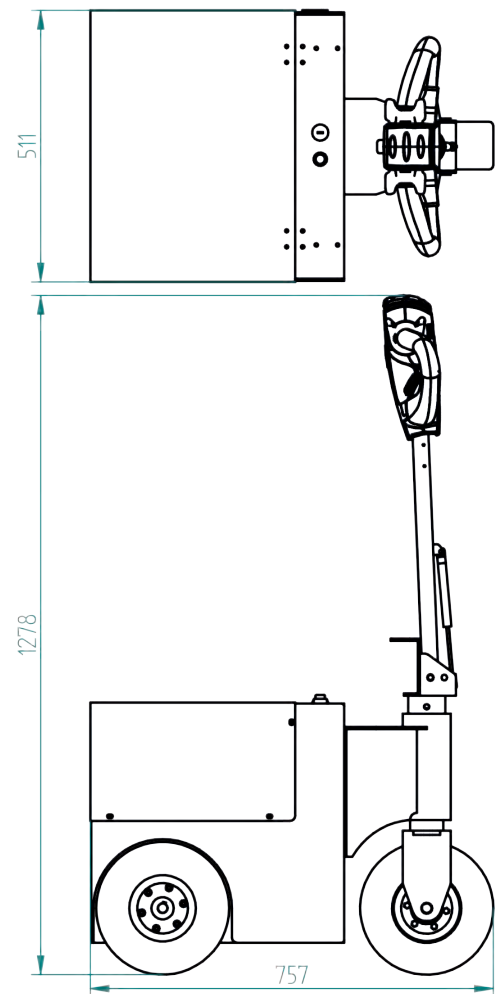
Frame	Steel, powder coated
Drive	24V DC, 600W, 100 rpm
Weight	256 kg
Weight trailer	2500 kg
Battery	Built in, 24V, 75 Ah
Speed	Max. 4,7 km/h
Drive wheels	Full rubber ø250x80 mm
Width	511mm
Length	757mm
Adze height	700-1278 (variable)
Folded	N/A
Noise level	68,5 dB
To use from	-40 °C / 70 °C
Protection class	Machine IP44

## Pulling power T2500 (in kg)



*\*Measured with a trolley with 2 swivelwheels and 2 fixed castors. Wheel diameter: 160mm*

## Dimensions T2500



## Standard T2500



## Standard parts T2500

Battery 12V-80A



Item number:  
M2102

Battery charger 24V 10A  
AGM external ind



Item number:  
M2134

Full-rubber drive wheel,  
black Ø250mm



*Dimensions Ø250 x 80 mm*

Item number:  
M0248

Adjustable tillerhead



Item number:  
Standardpart 1

Safety switch



Item number:  
Standardpart 2

2 programmable speeds



Item number:  
Standardpart 3

## Standard parts T2500

Engine 600W 100RPM  
BRAKE 6911413X



Item number:  
M2098

LED battery indicator  
LBF318-24V



Item number:  
M0123

## Options T2500



Upgrade Nonmarking tires (3) yellow CR

Article number:  
OPT0356



Upgrade Nonmarking tires (3) grey

Article number:  
OPT0058



Horn 103 dB

Article number:  
OPT0059



Emergency stop complete

Article number:  
OPT0063



Strobelight

Article number:  
OPT0065



Bumper bottom T2500

*Bump for T2500*

Article number:  
OPT0078



Safety fender for steering wheel

*Wheel Shield*

Article number:  
OPT0079



Strobelight on pole T2500

Article number:  
OPT0119



Acoustic signal driving backwards

Article number:  
OPT0254



Radio remote

*6-channel*

Article number:  
OPT0026-5



Push Bar

Article number:  
OPT0048



hour counter complete

Article number:  
OPT0056

## Options T2500



Horn 90dB

Article number:  
OPT0057



Antistatic strip

Article number:  
OPT0058



Code lock

Article number:  
OPT0068



Preparation electric hook

Article number:  
OPT0143



Ignition key unequal key

Article number:  
OPT0145



Ignition key equal key 701

Article number:  
OPT0146



Drive protection

*Tiller head in straight up position*

Article number:  
OPT0153



Customized programming

*please indicate specific settings*

Article number:  
OPT0170



Maximum weight

Article number:  
OPT0172



Conversion to Push machine

Article number:  
OPT0201



Preparation charging station T2500/T3500

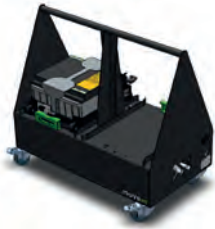
Article number:  
OPT0352



Programmer for Italsea

Article number:  
D0003

## Options T2500



Charging station incl. 1 battery pack

*Inclusive one battery pack 24V 75Ah, meant for T2500/T3500*

Article number:  
OPT0071



U-Frame for waste container 1000/1100L

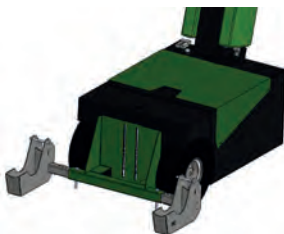
Article number:  
OPT0088



Adaptor for shopping trolleys (90°)

*adjustable in width*

Article number:  
OPT0324



Adaptor for loggagetrolleys (90°)

*adjustable in width*

Article number:  
OPT0327



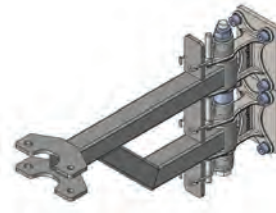
Base part hook 90°

Article number:  
H7030



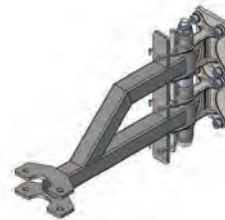
Base part hook 90° double spring

Article number:  
H7040



Base part heavy hook 90° lowered

Article number:  
H7070



Base part heavy hook 90° raised

Article number:  
H7080



Base part hook 90° manual control

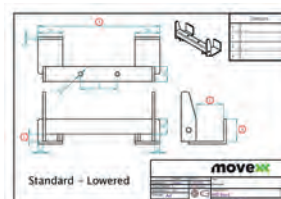
Article number:  
H7090



Customized Hook

*Please complete corresponding sheet (!)*

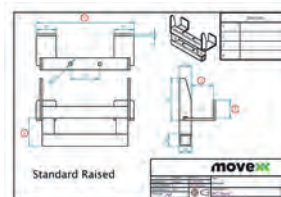
Article number:  
HA5000



Customized Hook (LOWERED)

*Please complete corresponding sheet (!)*

Article number:  
HB5000



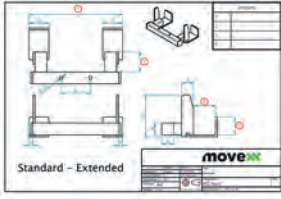
Customized Hook (RAISED)

*Please complete corresponding sheet (!)*

Article number:  
HC5000



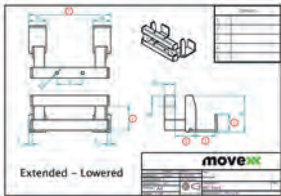
## Options T2500



### Customized Hook (EX- TENDED)

*Please complete corresponding  
sheet*

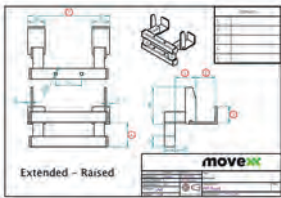
**Article number:**  
HD5000



### Customized Hook (EX- TENDED / LOWERED)

*Please complete correspon-  
ding sheet*

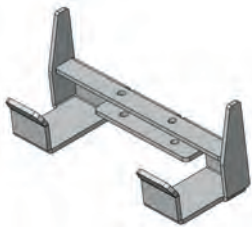
**Article number:**  
HE5000



### Customized Hook (EX- TENDED / RAISED)

*Please complete correspon-  
ding sheet*

**Article number:**  
HF5000



### HA245.55.45.15.0

*Fronthook for 50mm. Profile,  
Heavy Duty Hook*

**Article number:**  
H0004



### Pen for Drawbar Ø16 incl. Backplate

**Article number:**  
H0064



### hitch ball coupling Ø 50mm incl. adapter

**Article number:**  
H0068



### Towbar for Movexx E-Frame

*Suitable for OPT0067*

**Article number:**  
H0070



### Towbar + pin Ø15mm incl. Back plate

**Article number:**  
H0071



### Pen for Drawbar Ø10 incl. Backplate

**Article number:**  
H0072



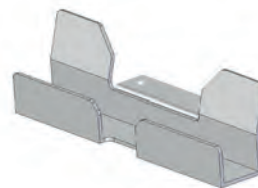
### Hook for LKE Platformwa- gon Type X

**Article number:**  
H0076



### Hook K-Hartwall dolly DOS1617/1636 90°

**Article number:**  
H0083



### HA250.35.30.0.0

*Hook for 30 mm. Profile For  
furniture trolley*

**Article number:**  
H0097

## Options T2500



Folding Hook, diameter 16

Article number:  
H0128-D16



Folding Hook, diameter 20

Article number:  
H0128-D20



Folding Hook, diameter 25

Article number:  
H0128-D25



Folding Hook, diameter 27

Article number:  
H0128-D27



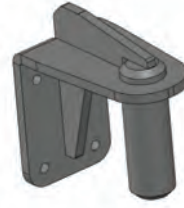
Folding Hook, diameter 32

Article number:  
H0128-D32



Folding Hook, diameter 35

Article number:  
H0128-D35



Pin drawbar Ø35 complete

Article number:  
H0144



Hook locking system

Article number:  
OPT0012



Folding hook for flower trolleys

Article number:  
OPT0099



Electrical locking module for hook

Article number:  
OPT0129



Heavy Duty Liftmodule

Article number:  
OPT0271

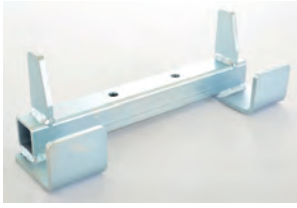


Movexx Parking label

Article number:  
OPT0245



## Options T2500



HA270.43.40.0.0

*Fronthook for 40mm. profile. Hartwall Pallet-Trolley (DOS1870)*

**Article number:**  
H0003



HA250.43.35.0.0

*Front hook 40mm. profile*

**Article number:**  
H0051



HD370.73.35.0.40

*Fronthook for 70mm. profile (Flower container)*

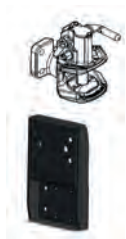
**Article number:**  
H0055



HA245.142.35.0.0

*Fronthook for 140mm. profile (wooden trolley)*

**Article number:**  
H0057



Trailer coupling with frame pin Ø25mm

**Article number:**  
H0062



HA250.23.27.0.0

*Fronthook for 20mm. profile*

**Article number:**  
H0067



HB245.60.45.30.0

*Fronthook for FEIL plastic floor trolley*

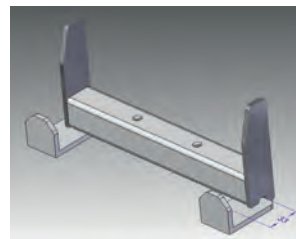
**Article number:**  
H0092



HA250.28.30.0.0

*Fronthook for 25mm. profile*

**Article number:**  
H0094



HA250.33.30.0.0

*Fronthook for 30mm. profile*

**Article number:**  
H0095



HF242.23.30.15.20

*Fronthook for 20 mm. profile (Hospital Logistics)*

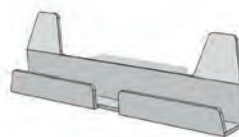
**Article number:**  
H0116



Spring hitch 16 mm

*Pin 16 mm.*

**Article number:**  
H0120



HA250.23.20.0.0

*Hook for 20 mm. profile*

**Article number:**  
H0123

## Options T2500



HB135.18.20.35.0

*Fronthook for 15mm. profiel  
(Hartwall Dolly 400x600)*

Article number:  
H0125



Towing hook with pin  $\varnothing 32$

Article number:  
H0146



Coupling nettingscontainer,

*Nettings 6mm*

Article number:  
K0007



Coupling rollcontainer

*Nettings 10mm.*

Article number:  
K0008



Coupling Rollcontainer

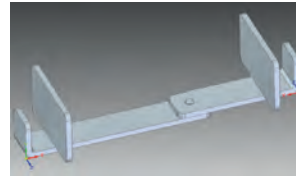
*Width 42 mm.*

Article number:  
K0010



Coupling with carabiners

Article number:  
K0026



Coupling jaw 20mm

Article number:  
K0027



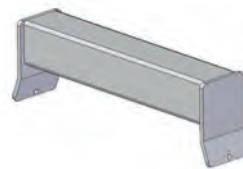
Coupling trolleys side R28

Article number:  
K0028



Coupling Open Front-Closed Backside

Article number:  
K0030



Welding part for trolley's

*Profile 50x50mm.*

Article number:  
OPT0032



Bolt-on part for Trolley's

*Profile 50x50mm.*

Article number:  
OPT0033

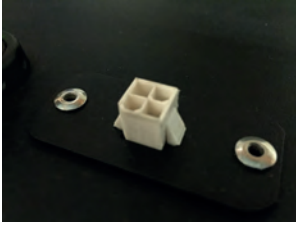


Angle limitation

*Stainless steel*

Article number:  
OPT0244

## Options T2500



Diagnostic connector

Article number:  
OPT0270

---



Frontcontrol T2500 /  
T3500

Article number:  
OPT0380

---



Urgent order surcharge

Article number:  
SPOED

---

---

---

---

---

---

---

---

---

---



## Movexx International B.V.

Generatorstraat 17

3903 LH Veenendaal

Tel +31 (0)318 51.99.00

Fax +31 (0)318 50.80.20

E-mail [info@movexx.nl](mailto:info@movexx.nl)